

CESSNA AIRCRAFT COMPANY
WICHITA, KANSAS

DATE 6-19-52

MODEL 170B

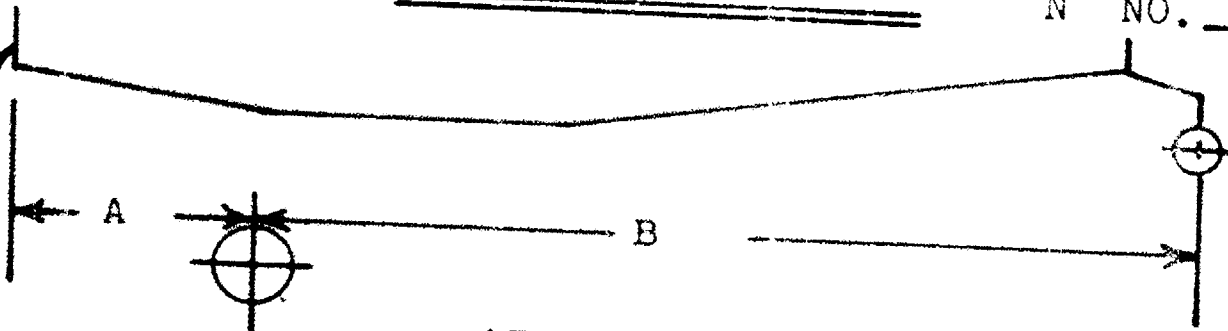
SERIAL NO. 20734

WEIGHT & BALANCE DATA

N NO. 2582D (STANDARD)

DATUM
FIREWALL

LEVEL AT
DOOR HEADER



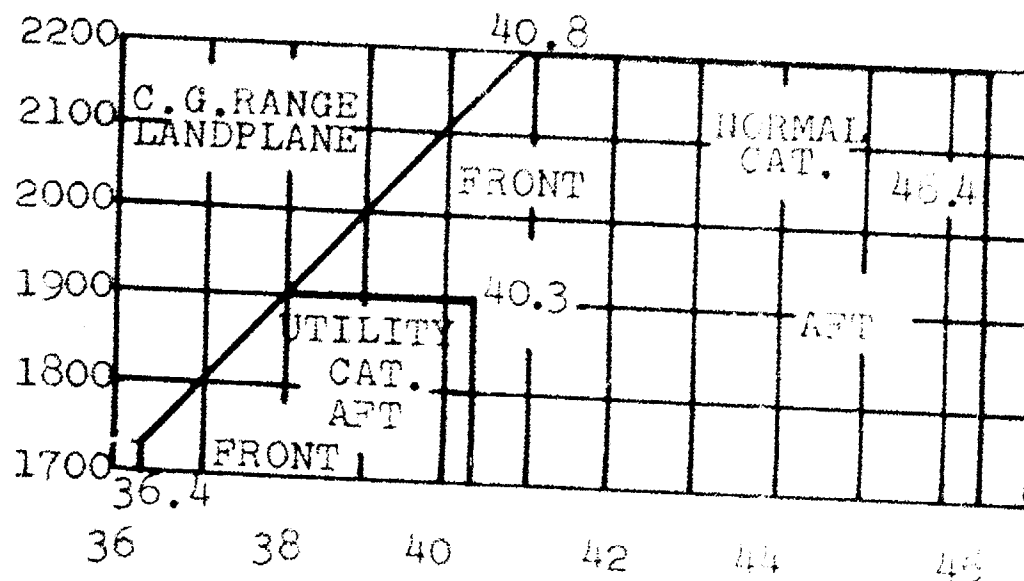
AIRCRAFT WEIGHT

POSITION	SCALE READING	TARE	NET WEIGHT
LEFT WHEEL			
RIGHT WHEEL			
TAIL WHEEL			
TOTAL			

TAIL WT. X WHEEL \bar{C} TO \bar{C}

TOTAL WEIGHT + DIM. A = COMBINED + =

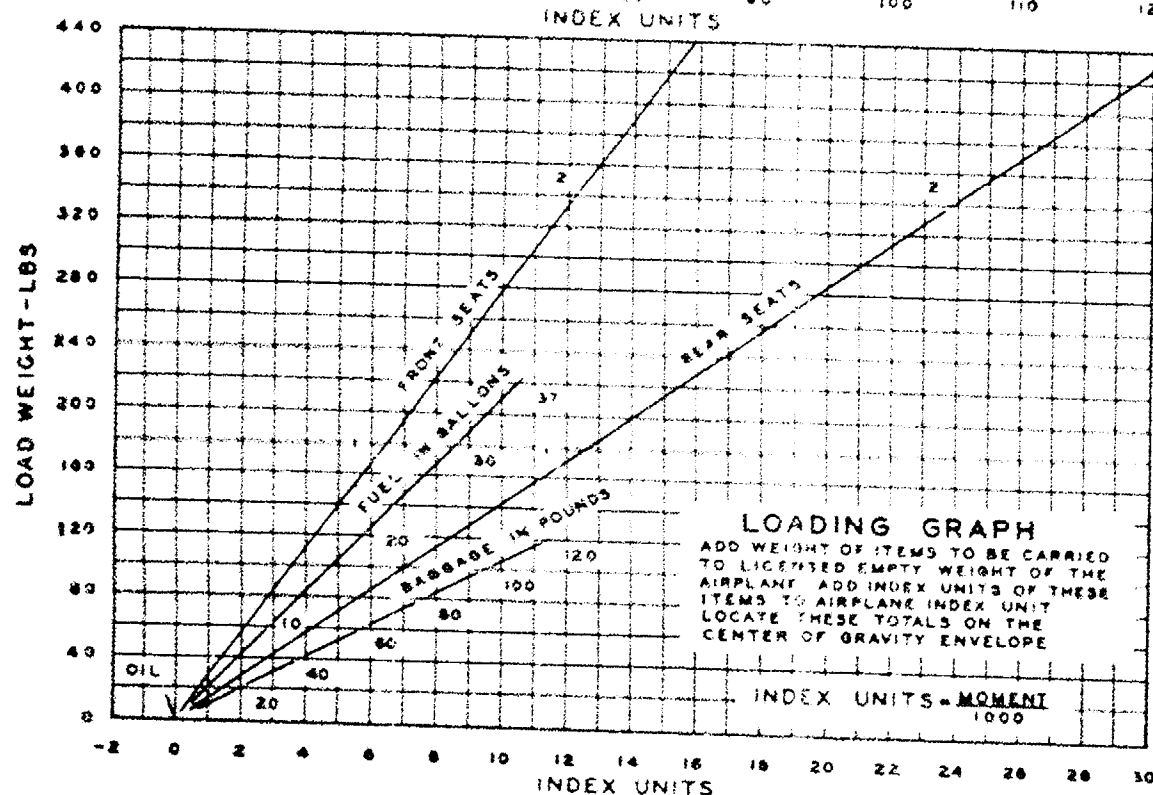
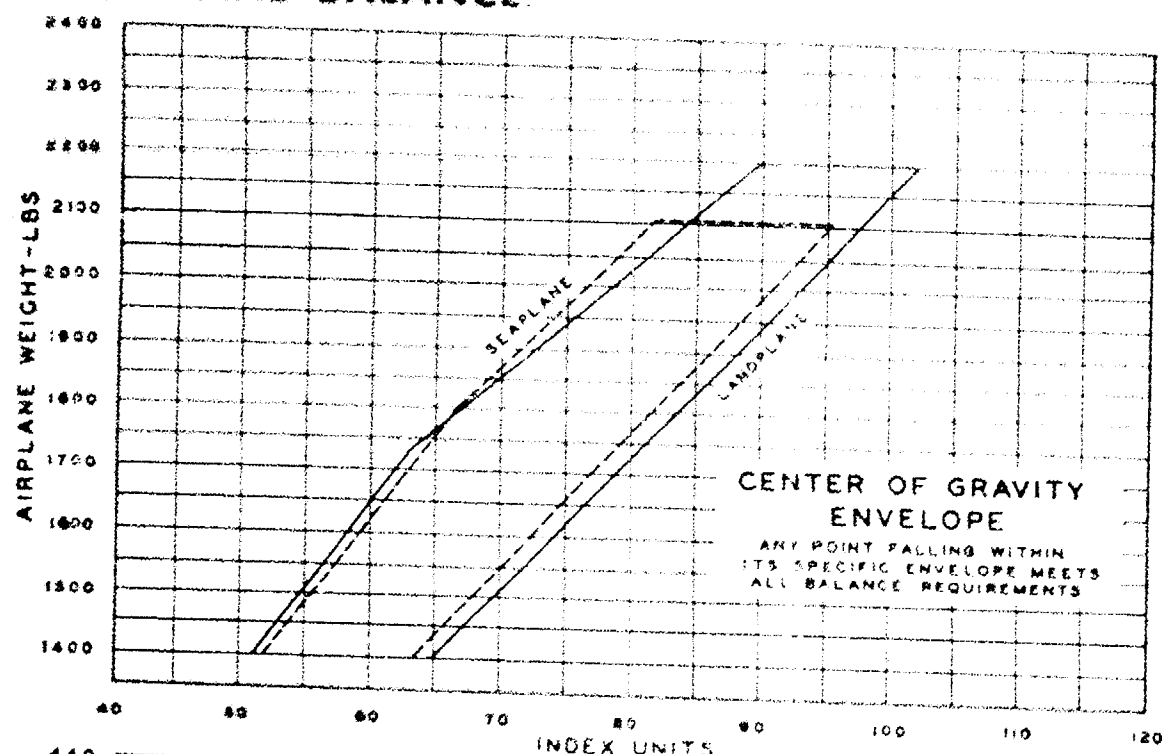
ITEMS	WEIGHT	ARM	MOMENT
AIRCRAFT EMPTY WT.	1270.0	38.5	48895
UNUSEABLE FUEL	30.0	46	1380
TOTALS	Licensed Empty Wt. 1300.0 LBS	Empty C.G. 38.7 INCHES	Total Moment 50275 INCH LBS



Maximum useful load is 900.

IT IS THE RESPONSIBILITY OF THE AIRPLANE OWNER AND THE PILOT TO INSURE THAT THE AIRPLANE IS LOADED PROPERLY. THE EMPTY WEIGHT C.G. AND USEFUL LOAD ARE NOTED ABOVE FOR THIS AIRPLANE AS DELIVERED FROM THE FACTORY. IF THE AIRPLANE HAS BEEN ALTERED, REFER TO THE LATEST APPROVED REPAIR AND ALTERATION FORM (ACA 337) FOR THIS INFORMATION.

WEIGHT AND BALANCE



EXAMPLE: Empty weight of 1300.0 lb., moment of 50275 in. lb,
or index of 50.3

	WT.	INDEX
EMPTY WEIGHT (LICENSED)		
OIL	1300.	50.3
PILOT & PASSENGER (1)	15	-0.3
PASSENGERS (2)	340	+12.2
FUEL	340	+23.8
BAGGAGE (TO MAKE GR. WT.)	126.	6.
	79.	7.5
TOTAL	2200	99.5

Locate this point (2200 - 99.5) on the center of gravity envelope graph, and, since the point falls within the envelope, the above loading meets all balance requirements.

EQUIPMENT LIST
Cessna Model 170A

DATE 6-19-52

SERIAL NO. 20734

MODEL 170B

N NO. 2582D (STANDARD)

ITEMS OF EQUIPMENT CHECKED (X) ARE INSTALLED. WHEN * ITEMS REPLACE STANDARD EQUIPMENT, THE ACTUAL WEIGHT INCREASE OR DECREASE IS INDICATED.

ITEM NO.	DESCRIPTION	WEIGHT	ARM
401	X CABIN HEATER VALVE ASSEMBLY	1.	- 2
	X CO-PILOT BRAKES	1.	/ 5.5
	X ENGINE SHIELDING	3.	-18
	O FIXED ANTENNA	.5	/116
	O RADIO TRANSMITTER-RECEIVER	13.	/ 7
	X LOUDSPEAKER INSTALLATION	3.	/39
304	X LANDING LIGHT INSTALLATION	2.	/32
	X*SENSITIVE ALTIMETER	.5	/15
	X TURN & BANK INDICATOR	2.	/15
	X RATE OF CLIMB INDICATOR	1.	/15
	X CLOCK	.5	/15
	X STALL WARNING INDICATOR	1.	/17
	O OUTSIDE AIR TEMPERATURE GAUGE	.5	/15
1(a)	X*PROPELLER - McCauley 1A170	18.	-39
3	O PROPELLER - FIXED PITCH, WOOD	15.	-39
	O FIRE EXTINGUISHER & BRACKET	7.	/66
	O FLARE INSTALLATION	18.	/98
	O SKI INSTALLATION	53.	/16
	O CESSNA WHEEL STREAMLINES	6.	/22
101	X STARTER	16.	- 6
102	X CARBURETOR AIR FILTER	1.	-27
103	X CARBURETOR AIR HEATER & MUFFLERS	10.	-23
201(a)	X WHEEL-BRAKE ASSEMBLIES (6:00-6)	31.	/22
201(b)	O CASTERING WHEEL-BRAKES & TIRES	48.	/22
202	O*WHEEL BRAKE ASSEMBLIES (7:00-6)	1.	/22
204	X TAIL WHEEL & TIRE (PNEUMATIC)	5x 8.	/216 /249
301	X GENERATOR	10.	- 6
302	X BATTERY	23.	- 3
402(c)	X APPROVED C.A.A. FLIGHT MANUAL		
403	O BLIND FLYING KIT	5.	/26
604	O VENTURI INSTALLATION	10.	/17
	X CESSNA COMB. #3	26.	/25
REQUIRED EQUIPMENT: 1(a), 103, 201(a), 202, 204, 402(c).			

EQUIPMENT LIST
Cessna Model 170B

SERIAL 20734 N 2582-D MODEL 170B DATE 6/13/52
 ENGINE & TYPE C-145-2 ENGINE SERIAL 6680-D-2-2
 LANDING GEAR SERIAL, RT. 1492 LT. 1465 N.A.A. PLATE NO. 220501
 DOOR KEY NO. 14F29 IGNITION KEY 14F29 COLOR
 (EXTERIOR Blue
 (INTERIOR Blue

The following items of equipment are installed in excess of required equipment. Mark only those items which are installed.

FIXED ANTENNA				CROSSWIND GEAR			
LANDING LIGHT RT. <u>2</u> LT. <u>2</u>				<u>164</u> PNEUMATIC TAILWHEEL <u>3</u>		<u>+1992</u>	<u>-1230</u>
SENSITIVE ALTIMETER <u>5</u>		<u>+7</u>		STEWART WARNER HEATER			
TURN & BANK <u>2</u>		<u>+30</u>		STRETCHER INST.			
RATE OF CLIMB <u>1</u>		<u>+15</u>		OIL FILTER			
CLOCK <u>5</u>		<u>+7</u>		CONTROL LOCK			
PROPELLER - McCAULEY SERIAL <u>55815</u>				JACK POINT			
SPINNER <u>18</u>		<u>-702</u>		CARGO TIE DOWN LUGS			
FIRE EXTINGUISHER				RADIO MAKE <u>1063</u> MODEL <u>2000</u>		<u>26</u>	<u>+25 +65</u>
FLARE INST.				VENTURI			
SEAPLANE FITTINGS				800 x 6 TIRES			
BATTERY <u>2-2</u>				DIR. GYRO			
WHEEL-PANTS				ATTITUDE GYRO			
RECORDING TACH.				OIL DILUTION SYSTEM			
OUTSIDE AIR TEMP. GAUGE				<i>New Light fixture</i>			
GYRO PANEL INST. & RELOCATED COMPASS							
CORROSION PROOFING							
HOLSTING RINGS							
SUN VISORS							
SEAT COVERS							